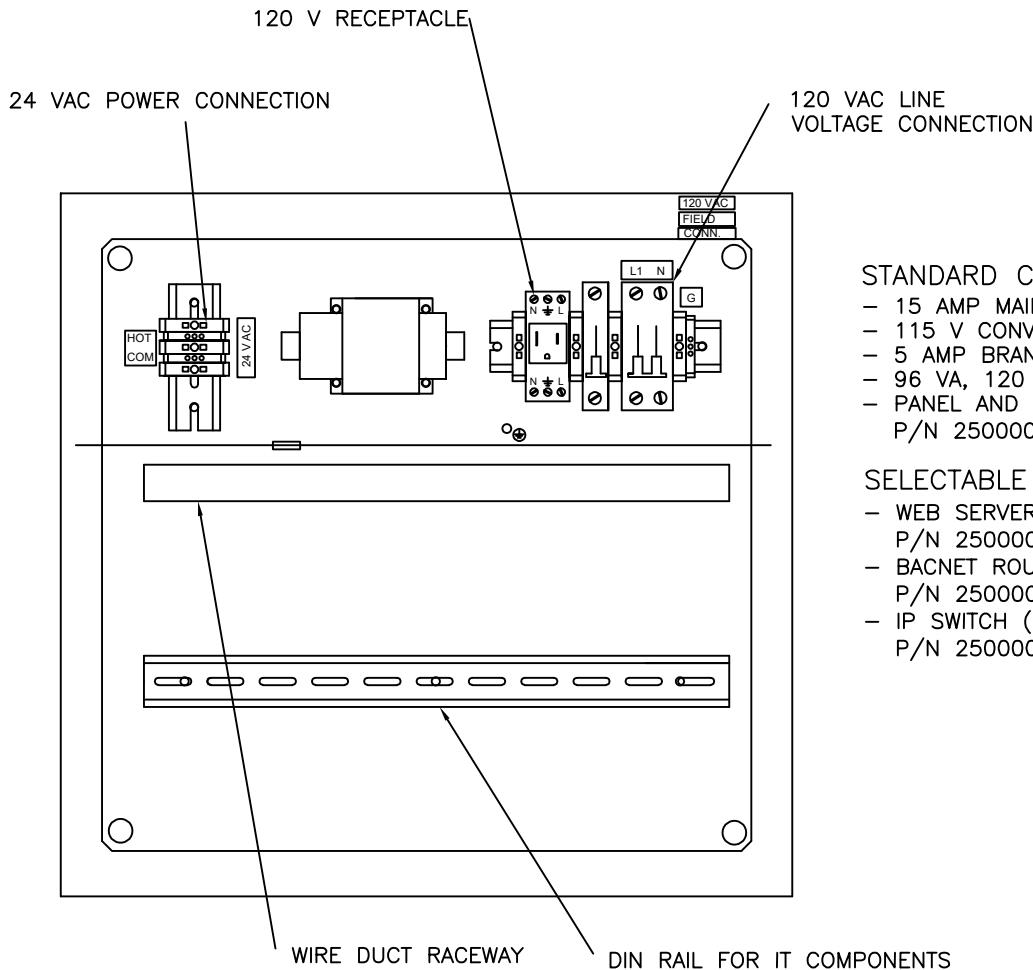
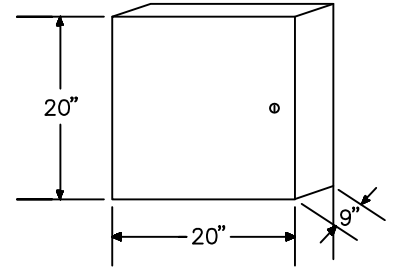


WEB SERVER POWER AND MOUNTING PANEL

FEATURES:

- FULLY ENCLOSED TYPE 1 PANEL WITH HINGED AND ELECTRICALLY BONDED DOOR
- COMPONENTS INCLUDED GET CONFIGURED AT TIME OF ORDER ENTRY BASED ON SIZE AND REQUIREMENTS OF THE SPECIFIC JOB
- PERFORATED STEEL INNER PANEL
- 5 AMP PROTECTED 120 VOLT CONVENIENCE RECEPTACLE
- ALL POWER COMPONENTS FACTORY MOUNTED AND WIRED
- ALL SELECTABLE IT COMPONENTS FACTORY MOUNTED ON DIN RAIL AND WIRED FOR POWER
- WIRE DUCT RACEWAYS FOR ALL POWER WIRES AND NETWORK CABLES



STANDARD COMPONENTS

- 15 AMP MAIN BREAKER
- 115 V CONVENIENCE RECEPTACLE
- 5 AMP BRANCH BREAKER FOR RECEPTACLE
- 96 VA, 120 VAC - 24 VDC TRANSFORMER
- PANEL AND ALL STANDARD COMPONENTS  
P/N 250000-923

SELECTABLE COMPONENTS

- WEB SERVER (MAX 1/PANEL)  
P/N 250000-922
- BACNET ROUTER (MAX OF 5/PANEL)  
P/N 250000-931
- IP SWITCH (MAX OF 1/PANEL)  
P/N 250000-933

ALL METRIC DIMENSIONS ( ) ARE SOFT CONVERTED. IMPERIAL DIMENSIONS ARE CONVERTED TO METRIC AND ROUNDED TO THE NEAREST MILLIMETER.

<b>PROJECT:</b>		<b>PRICE</b> <sup>®</sup>	
<b>ENGINEER:</b>		<i>UB SF</i>	
<b>CUSTOMER:</b>		275453	
<b>SUBMITTAL DATE:</b>	<b>SPEC. SYMBOL:</b>	2023/06/29	
		<b>WEB SERVER</b> FACTORY WIRED POWER AND MOUNTING WEB SERVER PANEL AC MODEL	